

SERIES 4100 4" SINGLE HUNG (AW75)

SPECIFICATIONS

I. GENERAL:

Scope of Work - Furnish all necessary materials, labor and equipment for the complete installation of aluminum windows for this project as shown on the drawings and herein specified. Windows shall be the "Series 4100" as manufactured by Thermal Windows, Inc., Tulsa, Oklahoma. The "Series 4100" is a single hung with thermally improved frame and sash consisting of an operable, "take-out" side load lower sash and a fixed upper lite. The specifications and materials for the "Series 4100" are as follows:

II. PRODUCTS:

Materials - Aluminum shall be of proper alloy for commercial window construction. All extruded sections shall be of 6063-T5 aluminum alloy.

Frame - Main frame and sash members shall be a nominal thickness as required by ANSI/AAMA 101. Main frame shall be 4.000" in depth. Horizontal sash members shall be hollow extrusions. Main frames and sash members are to be extruded aluminum with a structural thermal barrier of high density low thermal conductivity polyurethane, poured and debridged.

Locks - Shall consist of a White Bronze cam latch and keeper at the interlocking meeting rail along with an independent spring loaded latch for each sash.

Balances - Sash will be balanced by standard block & tackle balances. Balances shall hold the sash stationary in any position along the full range of sash travel. Balances shall meet the requirements of AAMA 902.2.

Weatherstripping - Shall be .250 polypile with mylar fins conforming to AAMA 701.2, Specification for Pile Weatherstrip. Weatherstripping shall be doubled at all points of contact of the sash and main frames and at the interlocking meeting rail. A dual vinyl bulb seal will be used at the sill.

III. CONSTRUCTION:

Assembly - Main frame shall be a mechanically joined construction. Corner joints should be "seam sealed" with a quality grade of sealant meeting the requirements of AAMA 803.3. The sash shall be assembled with two screws at each corner. All screws at joints of sash and main frame shall be secured into integral screw ports.

Glazing - Glass shall be factory glazed with an interior aluminium glazing bead with a wedge gasket. The insulated glass units shall be 1.000" overall thickness with two lites of .125" glass, separated by a .750" air space for optimum insulation. All insulated glass units shall meet the requirements of the ASTM E 774 specification, Class "A". Options: Applied muntins with insulated glazing.

Screens - Screen frame shall be of hollow extruded aluminum frames. Finish shall match the main frames and sash. Insect screening shall be fiberglass or aluminum wire secured with a vinyl spline. Screens shall be half length.

Finish - Shall be a factory applied baked polyurethane powder coat finish meeting the requirements of AAMA 2603/2604 for Pigmented Organic Coating on Extruded Aluminum. Standard Tier I colors available are bronze, white, crème, sandstone, and almond. Bronze anodizing, clear anodizing and high performance AAMA 605.2 finishes are optional.

Operation - The lower sash is operable on the "Series 4100" Single Hung window and will raise for ventilation. The lower sash is equipped with a release latch so that it will side load "take-out" for ease of maintenance.

IV. PERFORMANCE:

Structural - Shall meet the requirements of ANSI/AAMA A440-05 H/AW75 specification.

Thermal - Shall meet the requirements of AAMA 1503.1-88 CRF 57/52.

AT/FP - Shall meet the requirements of UFC 4-010-01. Engineering Calculations to ASTM F 2248-03 and/or Shock Tube Testing to ASTM F 1642/GSA TS01 Level 2/Minimal Hazard.

Forced Entry - Shall meet the requirements for AAMA 1302.5-76 and ASTM F588 Load Identification Level 10.

Life Cycle - Product meets the criteria including passing air and water tests at the conclusion of the cycle test requirements of AAMA 101 and AAMA 910.

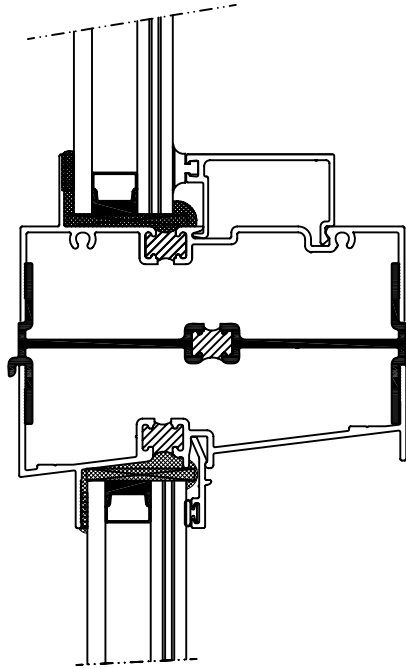
V. INSTALLATION:

Qualifications - Only skilled mechanics with experience in this trade. Units shall be installed plumb, level, square and shall be secured in accordance with detailed shop drawings. A non-hardening sealant compatible with aluminum shall be provided by the installer and applied in sufficient quantity to provide a weathertight seal between the window and surrounding construction.

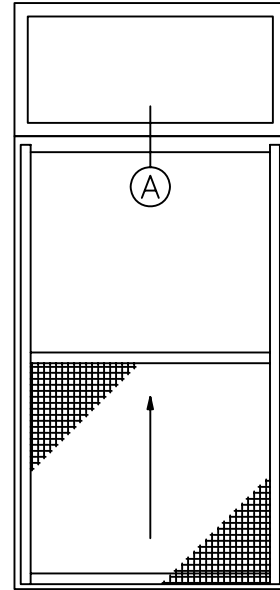
Installation Details - The window manufacturer shall submit complete installation details for the Architects approval. The drawings shall show elevations of windows, full size details of frame and vents, details of construction and anchorage of window.

SERIES 4100 4" SINGLE HUNG (AW75)

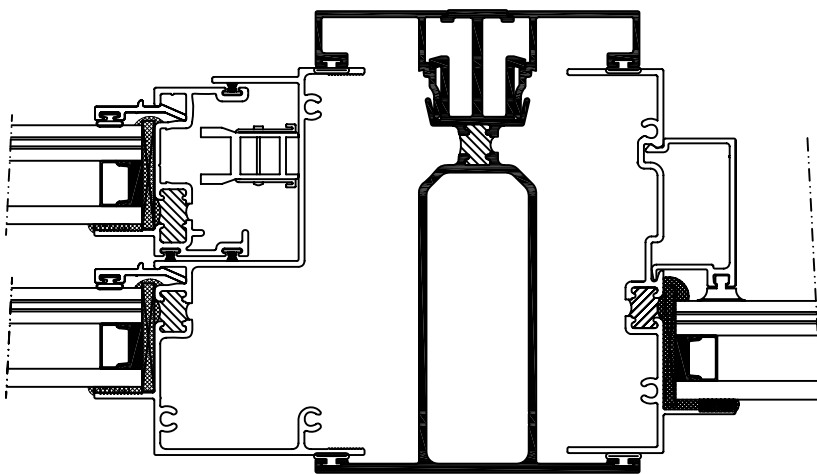
Typical Configurations (Scale: Half size)



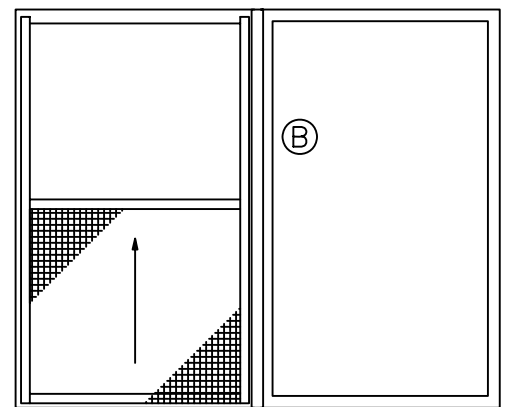
(A) 4100-4150



4100-4150



(B) 4100-4150

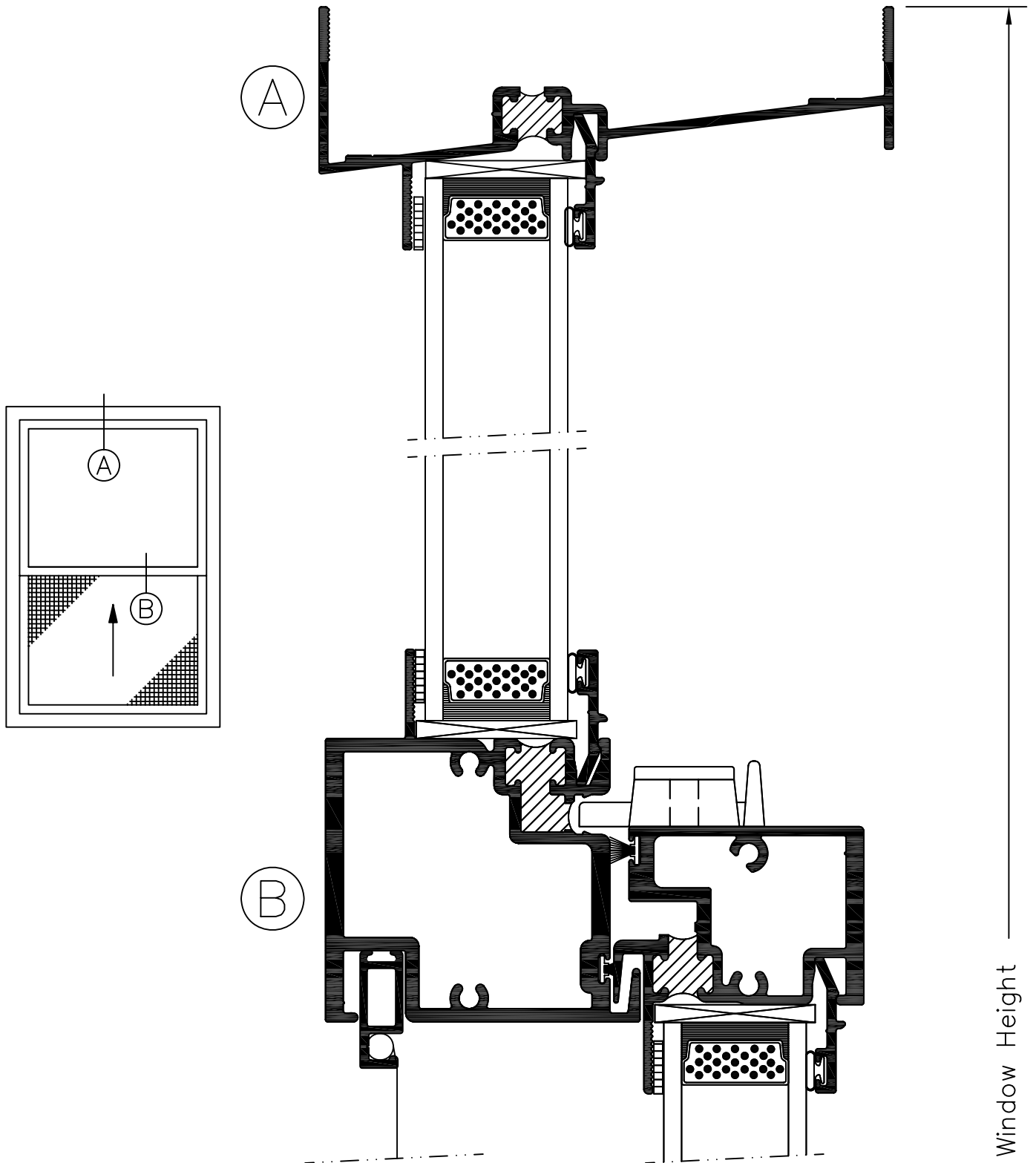


4100-4150

See Accessories section for additional options

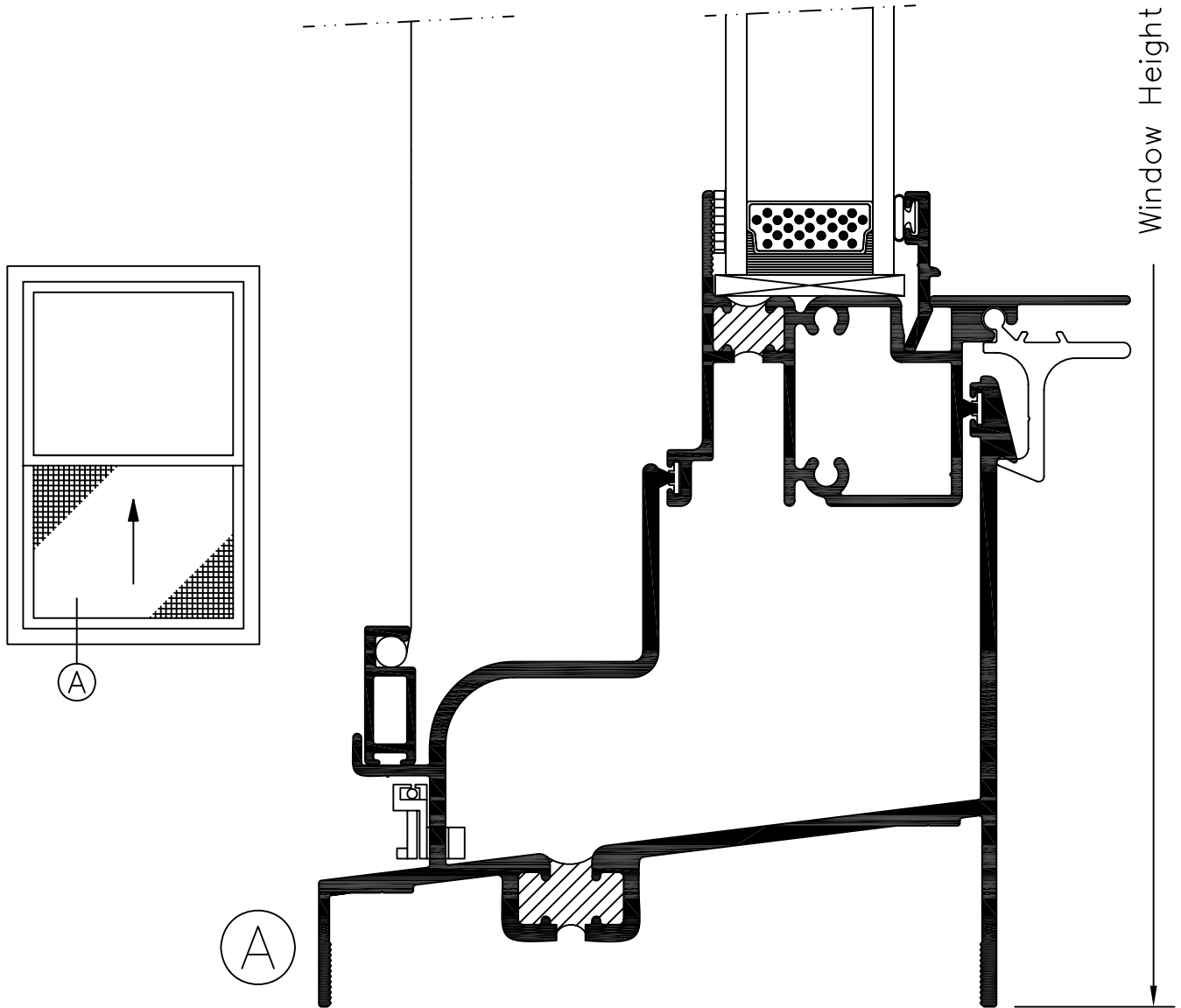
SERIES 4100 4" SINGLE HUNG (AW75)

Product Details (Scale: Full size)



SERIES 4100 4" SINGLE HUNG (AW75)

Product Details (Scale: Full size)



SERIES 4100 4" SINGLE HUNG (AW75)

Product Details (Scale: Full size)

