

SERIES 700 3-1/4" DOUBLE HUNG (C40)

SPECIFICATIONS

I. GENERAL:

Scope of Work - Furnish all necessary materials, labor and equipment for the complete installation of aluminum windows for this project as shown on the drawings and herein specified. Windows shall be the "Series 700" as manufactured by Thermal Windows, Inc., Tulsa, Oklahoma. The "Series 700" is a double hung with thermally improved frame and sash consisting of an operable, tilt lower sash as well as an operable, tilt upper sash. The specifications and materials for the "Series 700" are as follows:

II. PRODUCTS:

Materials - Aluminum shall be of proper alloy for commercial window construction. All extruded sections shall be of 6063-T5 aluminum alloy.

Frame - Main frame and sash members shall be a nominal thickness as required by ANSI/AAMA 101. Main frame shall be 3.250" in depth. Horizontal sash members shall be hollow extrusions. Main frames and sash members are to be extruded aluminum with a structural thermal barrier of high density low thermal conductivity polyurethane, poured and debridged.

Locks - Shall consist of a cam latch at the interlocking meeting rail along with an independent spring loaded latch for each sash (upper and lower).

Balances - Sash will be balanced by field adjustable spirally wound spring sash balances attached to the main frame by pivot sash shoes of nylon. Balances shall hold the sash stationary in any position along the full range of sash travel. Where weight of sash requires, double sash balances will be used. Balances shall meet the requirements of AAMA 902.2.

Weatherstripping - Shall be .250 polypile with mylar fins conforming to AAMA 701.2, Specification for Pile Weatherstrip. Weatherstripping shall be doubled at all points of contact of the sash and main frames and at the interlocking meeting rail. A dual vinyl bulb seal will be used at the sill.

III. CONSTRUCTION:

Assembly - Main frame shall be a mechanically joined construction. Corner joints should be "seam sealed" with a quality grade of sealant meeting the requirements of AAMA 803.3. The sash shall be assembled with two screws at each corner. All screws at joints of sash and main frame shall be secured into integral screw ports.

Glazing - Glass in each operable sash shall be factory glazed with a marine (wrap around) reusable vinyl glazing channel. The insulated glass units shall be .875" overall thickness with two panes of double strength glass, separated by a .625" air space for optimum insulation. All insulated glass units shall

meet the requirements of the ASTM E 774 specification, Class "A".

Screens - Screen frame shall be of hollow extruded aluminum frames. Finish shall match the main frames and sash. Insect screening shall be aluminum wire or fiberglass secured with a vinyl spline. Screens shall be full length.

Finish - Shall be a factory applied baked polyurethane powder coat finish meeting the requirements of AAMA 2603 for Pigmented Organic Coating on Extruded Aluminum. Refer to "Colors and Finishes" chart for examples. Bronze anodizing, clear anodizing and high performance AAMA 2605 finishes are optional.

Operation - The lower and upper sash are operable on the "Series 700" Double Hung window and will raise and / or lower for ventilation. Each sash is equipped with a release latch so that it will tilt in for cleaning and is removable from the interior for ease of maintenance.

IV. PERFORMANCE:

Structural - Shall meet the requirements of AAMA/WDMA/CSA 101/I.S.2/A440-05, H-C40 specification.

Thermal - Shall meet the requirements of AAMA 1503.1-88 CRF 56 / 59.

NFRC - Shall meet the requirements of NFRC 100-97 and 200.

Forced Entry - Shall meet the requirements for AAMA 1302.5-76 and ASTM F588 Load Identification Grade 10.

Sound Transmission Class - Shall meet the requirements of ASTM E90. Ratings vary depending upon glazing. See Product Selection Guide for summary.

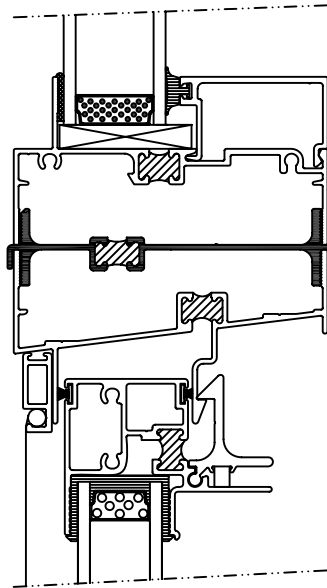
V. INSTALLATION:

Qualifications - Installation shall be performed by skilled, experienced tradesmen. Units shall be installed plumb, level, square and shall be secured in accordance with detailed shop drawings. A non-hardening sealant compatible with aluminum shall be provided by the installer and applied in sufficient quantity to provide a weathertight seal between the window and surrounding construction.

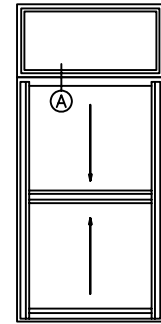
Installation Details - The window manufacturer shall submit complete installation details for the Architects approval. The drawings shall show elevations of windows, full size details of frame and vents, details of construction and anchorage of window.

SERIES 700 3-1/4" DOUBLE HUNG (C40)

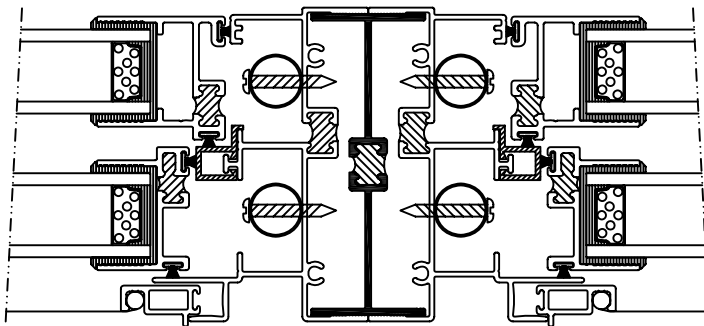
Typical Configurations (Scale: Half size)



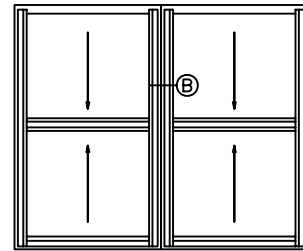
Ⓐ 750-700



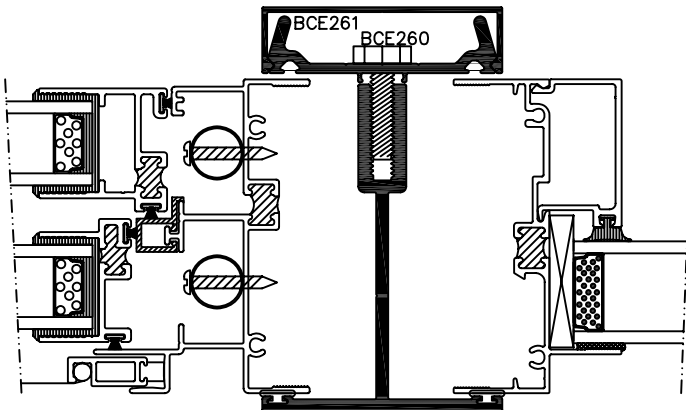
750-700



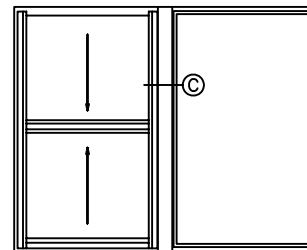
Ⓑ 700-700



700-700



Ⓒ 700-750

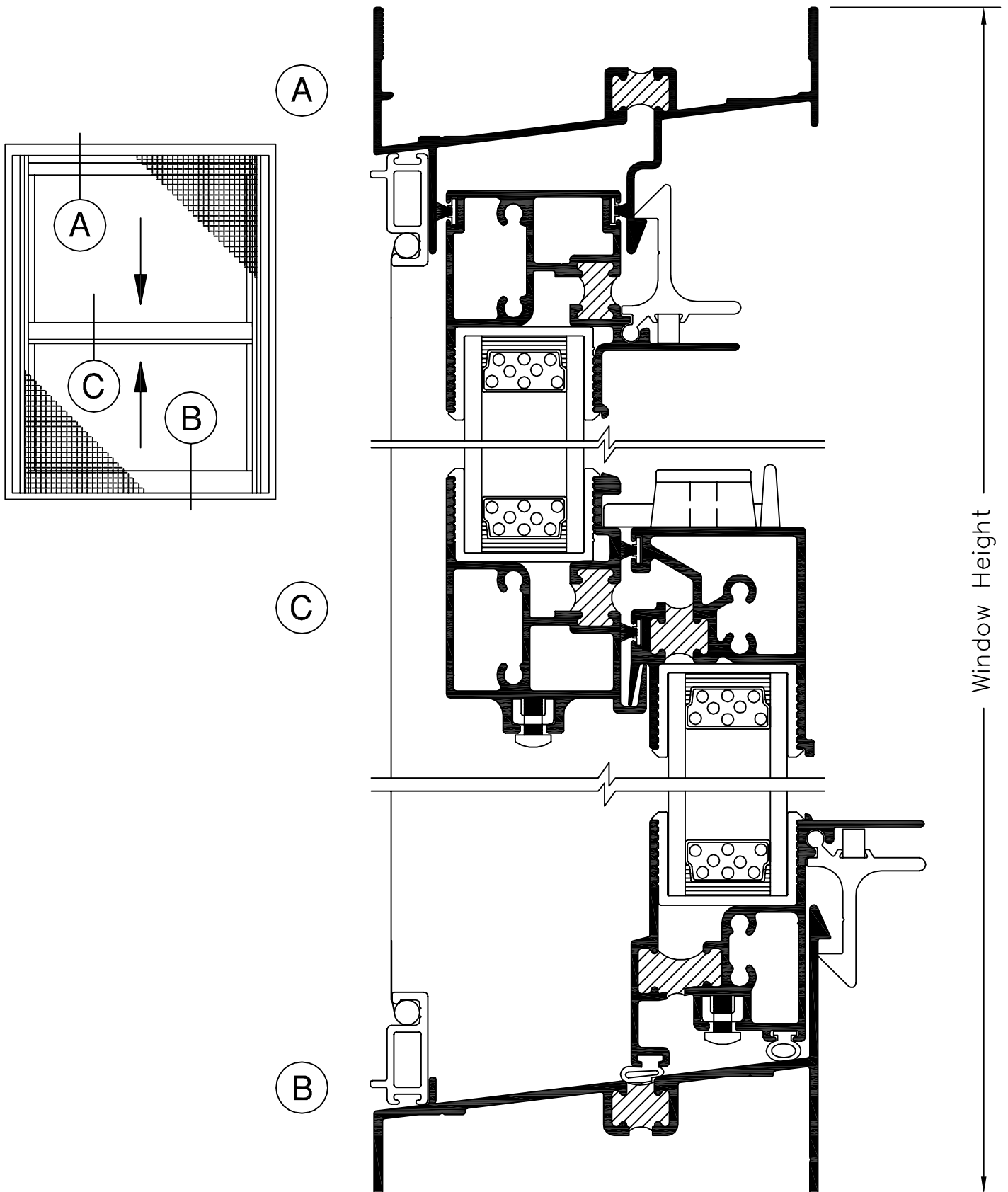


700-750

See Accessories section for additional options

SERIES 700 3-1/4" DOUBLE HUNG (C40)

Product Details (Scale: Full size)



SERIES 700 3-1/4" DOUBLE HUNG (C40)

Product Details (Scale: Full size)

