

SERIES 875 2-5/8" FIXED/AWNING PROJECTED WINDOW (AW75)

SPECIFICATIONS

I. GENERAL:

Scope of Work - Furnish all necessary materials, labor, and equipment for the complete installation of aluminum windows for this project as shown on the drawings and herein specified. Windows shall be the "Series 875" as manufactured by Thermal Windows, Inc., Tulsa, Oklahoma. The "Series 875" is a single frame window with a picture window stacked on top of a single vent project out awning window with a thermally improved main frame and vent consisting of a cam handle and side hinges. The specifications and materials for the "Series 875" are as follows:

II. PRODUCTS:

Materials - Aluminum shall be of proper alloy for commercial window construction. All extruded sections shall be of 6063-T5 aluminum alloy.

Frame - Main frame shall be a minimum nominal thickness of .094" and vent members shall be a .094 nominal thickness. Main frame shall be 2.625" in depth. Horizontal and vertical vent members shall be hollow extrusions. Main frames and vent members are to be extruded aluminum with a structural thermal barrier of high density low thermal conductivity polyurethane, poured and debrided.

Hardware - Lock shall consist of a high quality white bronze cam handle manufactured by Bronze Craft. Handle assemblies shall be finished to US-25-D.

Hinges - Shall consist of two stainless steel, four bar type design, utilizing a screw adjusted slide shoe. Hinges shall be constructed of high quality stamped and roll formed materials. Hinges used shall be certified to AAMA 904.1 specifications.

Weatherstripping - Shall have two rows of foam filled soft vinyl bulb weatherstrip at full perimeter of vents.

III. CONSTRUCTION:

Assembly - Main frame shall be a mechanically joined construction. Corner joints should be "seam sealed" with a quality grade of sealant meeting the requirements of AAMA 803.3. The vent shall be assembled with four screws at each corner. All screws at joints of vent and main frame shall be secured into integral screw ports.

Glazing - Glass shall be inside glazed with a butyl glazing tape and snap in extruded aluminum glazing bead containing a vinyl insert. The insulated glass units shall be 1.000" overall thickness with two lites of glass, separated by an air space for optimum insulation. All insulated glass units shall meet the requirements of the ASTM E 2188-02 / ASTM E 2190-02 specification, Class "A".

Screens - Screen frame shall be of hollow extruded aluminum frames. Finish shall match the main frames and sash. Insect screening shall be fiberglass or aluminum wire secured with a vinyl spline. Each screen shall be fastened by dimple clips.

Finish - Shall be a factory applied baked polyurethane powder coat finish meeting the requirements of AAMA 2604 for Pigmented Organic Coating on Extruded Aluminum. Standard Tier I colors available are bronze, white, creme, sandstone, and almond. Bronze anodizing, clear anodizing and high performance AAMA 605.2 finishes are optional.

Operation - The vent is operable on the "Series 875" awning window and will project out for ventilation.

IV. PERFORMANCE

Structural - Shall meet the requirements of AAMA/WDMA/CSA 101/I.S.2/A440-08, AW-PG75 specification.

NFRC - Shall meet the requirements of NFRC 100 and 200.

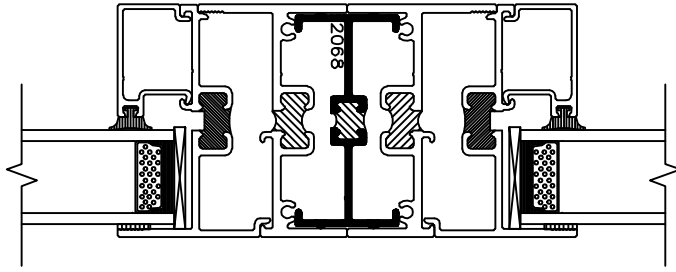
V. INSTALLATION:

Qualifications - Only skilled mechanics with experience in this trade. Units shall be installed plumb, level, square and shall be secured in accordance with detailed shop drawings. A non-hardening sealant compatible with aluminum shall be provided by the installer and applied in sufficient quantity to provide a weathertight seal between the window and surrounding construction.

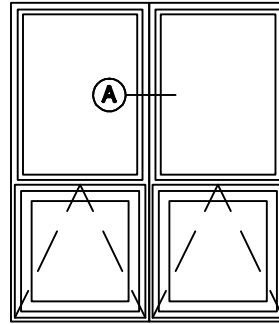
Installation Details - The window manufacturer shall submit complete installation details for the Architects approval. The drawings shall show elevations of windows, full size details of frame and vents, details of construction and anchorage of window.

SERIES 875 2-5/8" FIXED/AWNING PROJECTED WINDOW (AW75)

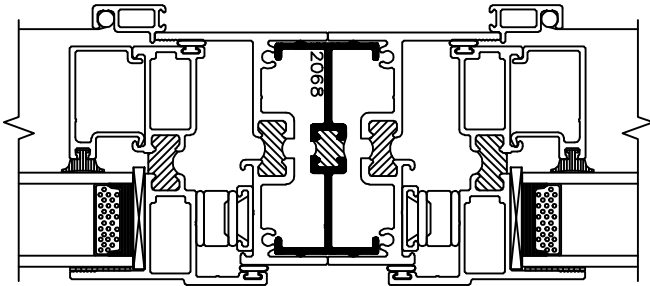
Typical Configurations (Scale: Half Size)



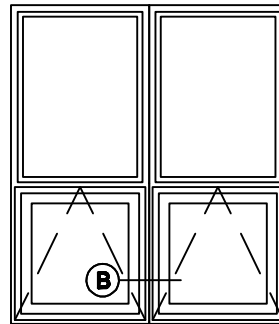
Ⓐ 875 FIXED - 875 FIXED



Ⓐ 875 FIXED - 875 FIXED



Ⓑ 875 PROJECTED - 875 PROJECTED

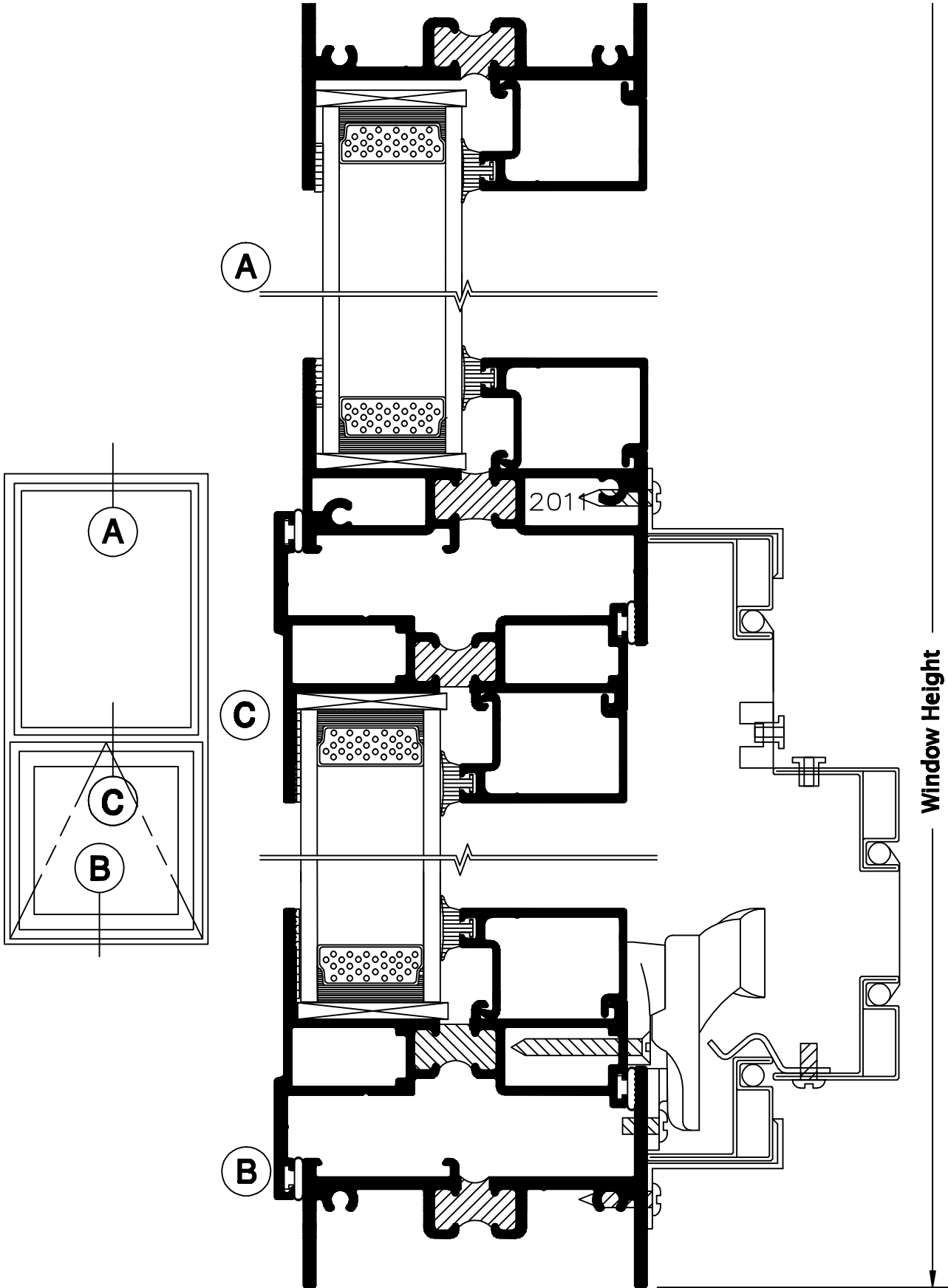


Ⓑ 875 PROJECTED - 875 PROJECTED

See Accessories section for additional options

SERIES 875 2-5/8" FIXED/AWNING PROJECTED WINDOW (AW75)

Product Details (Scale: Full Size)



SERIES 875 2-5/8" FIXED/AWNING PROJECTED WINDOW (AW75)

Product Details (Scale: Full Size)

