

# Sliding Glass Doors



## Commercial and Impact Rated Sliding Glass Doors for Retrofit or New Construction



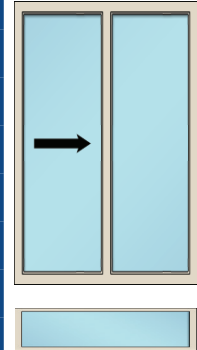
(top) View 14, Washington, DC - Series 9910, Light Gray  
(bottom) Acadia Three Metropolitan, Arlington, VA - Series 9910, Sandstone

(top) Argent Apartments, Silver Spring, MD - Series 9910, Dark Green  
(bottom) Avalon Sunset Towers, San Francisco, CA - Series 9910, Clear Anodized



# Product Selection Guide

## Sliding Glass Doors

	Series	Description	AAMA Rating	Uniform Structural Load (psf)	Air Infiltration (cfm/sq.ft.)	Water Resistance (psf)	U-factor <sup>1</sup>	STC Rating	Frame Depth	Max I.G. Thickness
	9900B	Sliding Glass Door ✓	LC30	45	.09	6	.43 / .33 / .33		4⅜"	⅞"
	9910	Sliding Glass Door ✓	CW30	60	.09	7.5	.43 / .33 / .33	31	4⅜"	⅞"
	9950	Sliding Glass Door ✓	CW45	67.5	.27	12 / 7.5	✂	31-35 ◇	4⅜"	1"
	9950B	Sliding Glass Door ✓	CW80	120	.27	12	✂	31-35 ◇	4⅜"	1"
	9950B5	Sliding Glass Door ✓	AW50	75	.22	12	✂	31-35 ◇	4⅜"	1"
	9950B8	Sliding Glass Door ✓ FL	AW80	120	.27	12	✂	31-35 ◇	4⅜"	1"
	9950C	Sliding Glass Door ✓	AW60	90	.22	12	✂	31-35 ◇	4⅜"	1"
	4151	SGD Transom ✓	AW80	120	.01	12	✂		4⅜"	1" •

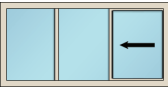
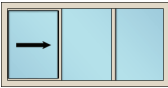
✓ Forced Entry Tested   FL Florida approved   ✂ Tests Pending   ◇ Laminated glass   • Single Glazed available

<sup>1</sup> NFRC 100 simulation results from certified testing labs. First u-factor: Low-E / Clear insulated glass, aluminum spacer, no argon. Second u-factor: Low-E on two surfaces with warm-edge spacer and argon. Third u-factor: Low-E / Clear / Low-E triple-pane unit with warm-edge spacer and argon.

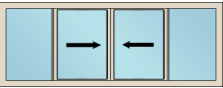
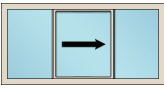
Due to the large number of glazing combinations available, please call our Contract Sales department at (800) 259-7580 for specific values.

## Hurricane / Impact Products

Series	Description	Rating / Test Size	Design Pressure (psf)	Uniform Structural Load (psf)	Water Resistance (psf)	Frame Depth	Maximum I.G. Thickness
9950	Sliding Glass Door Large Missile (FL state approval #14691.1)	C50 85" x 97"	+60/-60	+90/-90	12	4⅜"	1"



Most models are also available in XO0, OOX, OXO and OXXO configurations.



### Standard Features

- 4⅜" frame depth
- Integral Thermal Barrier throughout frame and sash
- AAMA 2604 organic powder coat finish
- 5 Tier 1 standard colors
- ⅞" Tempered insulated glass (1" in Series 9950)
- Extruded screen frame with fiberglass mesh

### Available Options

- Dual seal
- Hurricane-resistant glazing
- Receptor systems, snap trim
- XO, OX, OXO, OXXO and other operating configurations
- 9 Tier 2 colors at no additional charge (minimums apply)
- Hundreds of special colors; Anodized finishes
- AAMA 2605 high-performance finishes
- Low-E glass; tinted glass; obscure (frosted) glass
- Handle finishes available: brass, brushed nickel and more
- Nailing fin; Flush fin
- Contoured internal muntins; External applied muntins

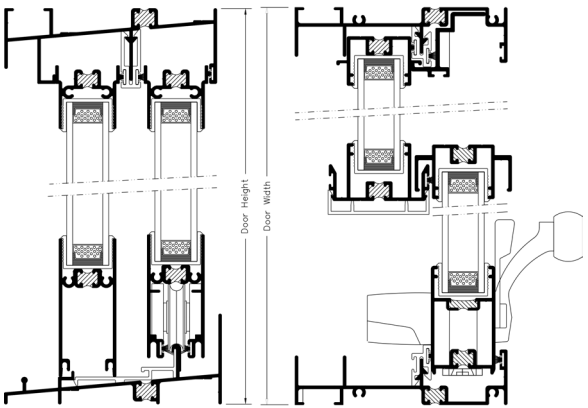


Elegant and durable hardware is available in painted finishes, as well as brass, brushed nickel and others.

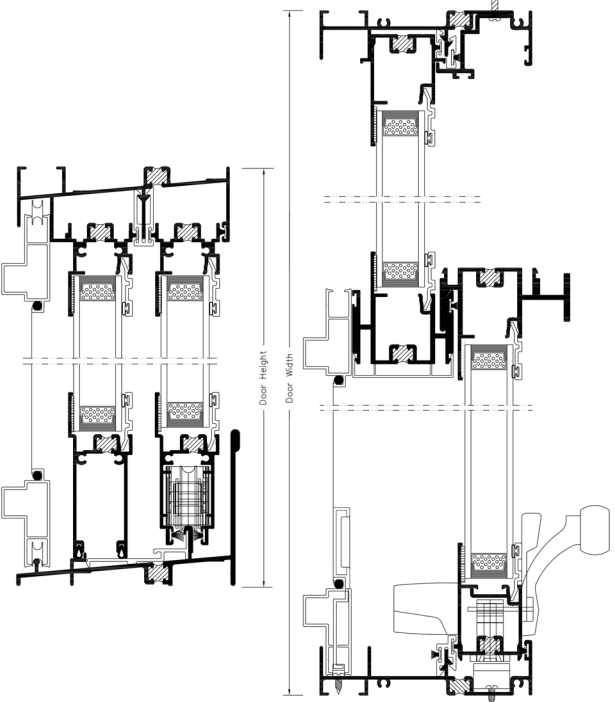


Series 9900B - Exterior  
Shown with standard bronze painted finish and black hardware.

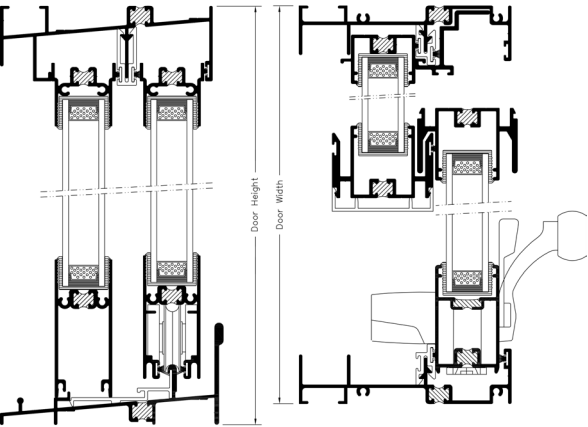
# Selected CAD Details\*



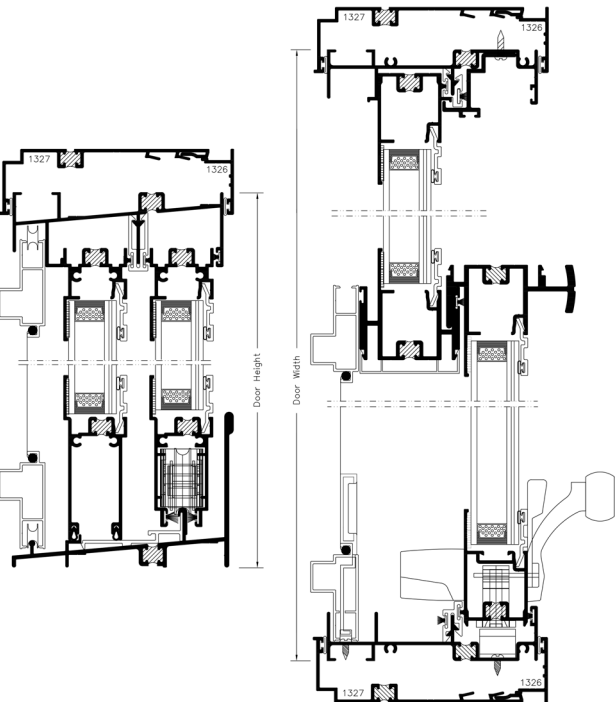
Series 9900B  
(Scale ¼"=1")  
4⅜" frame depth



Series 9950  
(Scale ¼"=1")  
4⅜" frame depth



Series 9910  
(Scale ¼"=1")  
4⅜" frame depth



Series 9950 (Impact)  
(Scale ¼"=1")  
4⅜" frame depth



Aloft Hotel – Oklahoma City, OK  
Series 9910, Clear Anodized

\* CAD files in DWG and PDF format and specifications for most products can be downloaded from [www.thermalwindows.com/cad](http://www.thermalwindows.com/cad)

# AAMA 2604 Powder Coat Finishes\*

## Tier 1 Colors<sup>1</sup>



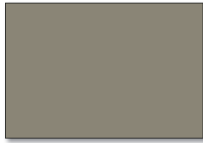
White



Creme



Almond



Sandstone



Bronze

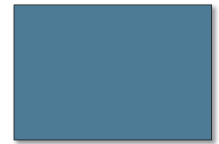
## Tier 2 Colors<sup>2</sup>



Light Green



Dark Green



Medium Blue



Bone White



Brick Red



Medium Bronze



Dauphin Gray



Dark Gray



Black

\* AAMA 2605 finishes are also available.

Custom colors are available. Minimums apply - Contact us for details.

<sup>1</sup> No Minimum Volume Requirement applies to Tier 1 finishes.

<sup>2</sup> Minimum Volume Requirements Apply to Tier 2 finishes. 3,000 sq.ft. or more at standard pricing. Smaller quantities are available at an additional cost.

Hardware and vinyl colors are subject to manufacturer specifications. Colors shown are for general information only. It cannot be assumed that final finishes will match these examples.

## About Thermal Windows, Inc.

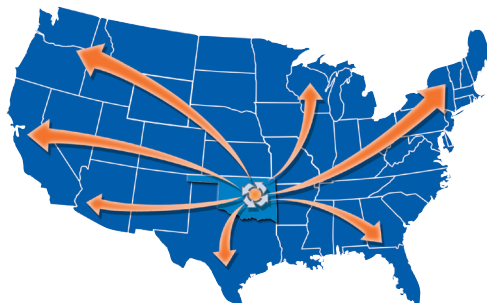
Thermal Windows, Inc. is celebrating 40 years of quality window design and production. We manufacture energy efficient aluminum windows, sliding glass doors and terrace doors for commercial and residential retrofit and new construction. Founded by Bob G. Pool in 1979, the company has grown steadily to become one of the top window manufacturers in America. Sales and manufacturing operations in Tulsa, Oklahoma occupy over 300,000 sq.ft. There are company showrooms in Tulsa and Oklahoma City, as well as dealers in nearly every state.

Our in-house research, design and testing programs provide continuous quality assurance. Our testing equipment is calibrated by a certified AAMA laboratory. All testing is conducted by certified AAMA technicians. In manufacturing, we monitor quality in our powder coat, debridging and insulating glass facilities to maintain a high degree of control over critical areas of window production. Our insulating glass line consistently provides Class "A" certification I.G. units.

In addition to our commitment to testing and upgrading existing products, we continue to design new products to meet the fenestration needs of the residential, commercial and heavy commercial markets.



Corporate headquarters, manufacturing plant and showroom in Tulsa, Oklahoma



Our central location allows us to ship economically throughout the U.S.A.



Scan the QR code above to visit our website.

### Corporate Headquarters & Manufacturing Plant

12805 E. 31<sup>st</sup> Street • Tulsa, OK 74146  
Tel: (918) 663-7580 • Fax: (918) 665-2197  
[www.thermalwindows.com](http://www.thermalwindows.com)  
Email: [info@thermalwindows.com](mailto:info@thermalwindows.com)

**(800) 259-7580**



**THERMAL  
WINDOWS, INC.**