

# SERIES 1450 3-1/4" FIXED WINDOW (CW80)

## SPECIFICATIONS

### I. GENERAL:

Scope of Work - Furnish all necessary materials, labor and equipment for the complete installation of aluminum windows for this project as shown on the drawings and herein specified. Windows shall be the "Series 1450" as manufactured by Thermal Windows, Inc., Tulsa, Oklahoma. The "Series 1450" is a fixed window with thermally improved frame. The specifications and materials for the "Series 1450" are as follows:

### II. PRODUCTS:

Materials - Aluminum shall be of proper alloy for commercial window construction. All extruded sections shall be of 6063-T5 aluminum alloy.

Frame - Main frame members shall be a nominal thickness as required by ANSI/AAMA 101. Main frame shall be 3.25" in depth. Main frames are to be extruded aluminum with a dual insulbar thermal barrier system creating a 5/8" wide thermal barrier.

### III. CONSTRUCTION:

Assembly - Main frame shall be of mitered, sealed, crimped and staked corner construction. Each corner shall consist of one extruded aluminum corner key held in place with two die cast retainer pins, one die cast corner key staked in place and one friction fit hard plastic corner key.

Glazing - Glass shall be inside glazed using EPDM gasket at exterior perimeter with extruded aluminum glazing bead and EPDM wedge at interior of glass. The insulated glass units shall be 1" overall thickness with the interior and exterior lite of double strength glass, separated by a .750" air space for optimum insulation. All insulated glass units shall meet the requirements of the ASTM E 2190 specification, Class "A".

Finish - Shall be a factory applied baked polyurethane powder coat finish meeting the requirements of AAMA 2604 for Pigmented Organic Coating on Extruded Aluminum. Refer to "Colors and Finishes" chart for examples. Bronze anodizing, clear anodizing and high performance AAMA 2605 finishes are optional.

### IV. PERFORMANCE:

Structural - Shall meet the requirements of AAMA A440-08, CW-PG80 specification.

NFRC - Shall meet the requirements of NFRC 100 and 200.

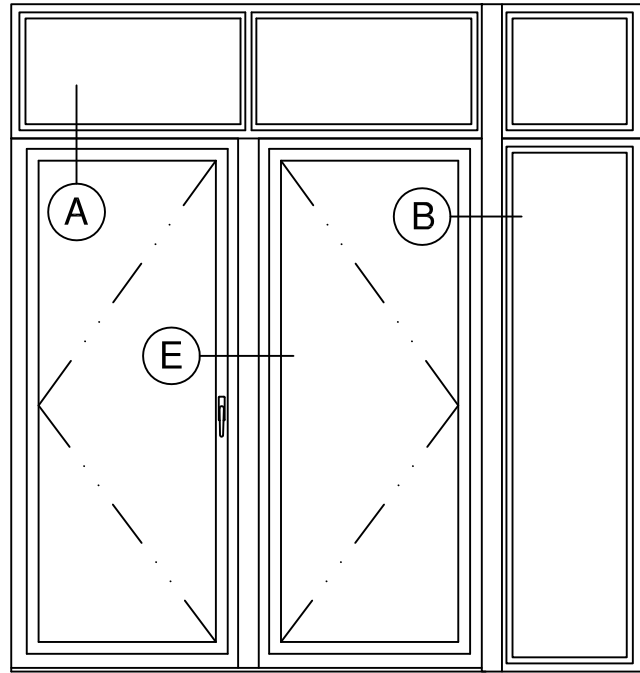
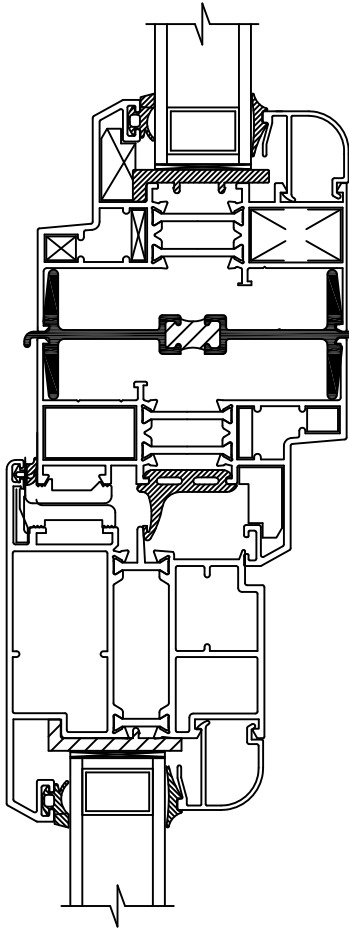
### V. INSTALLATION:

Qualifications - Installation shall be performed by skilled, experienced tradesmen. Units shall be installed plumb, level, square and shall be secured in accordance with detailed shop drawings. A non-hardening sealant compatible with aluminum shall be provided by the installer and applied in sufficient quantity to provide a weathertight seal between the window and surrounding construction.

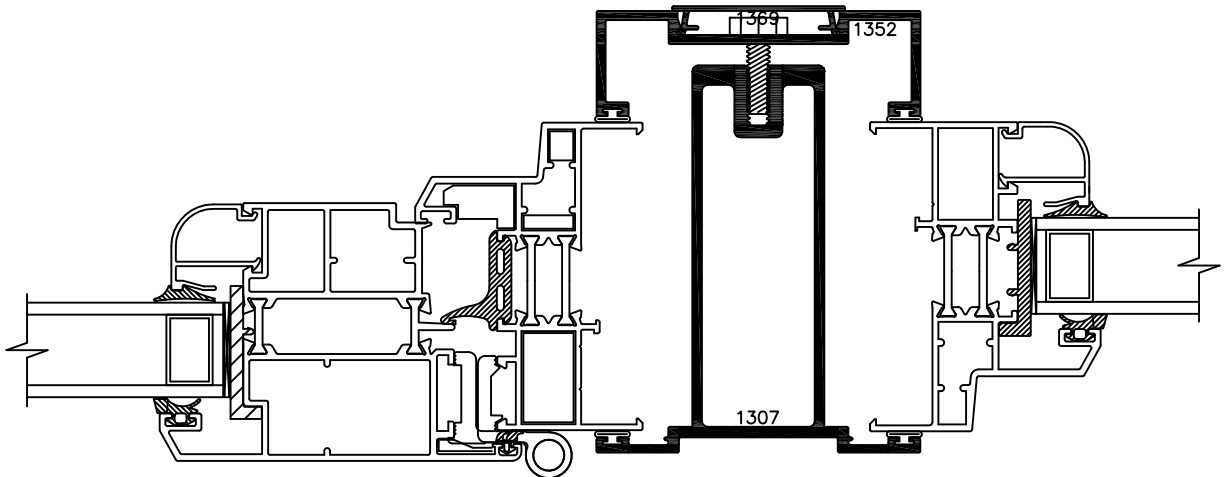
Installation Details - The window manufacturer shall submit complete installation details for the Architects approval. The drawings shall show elevations of windows, full size details of frame and vents, details of construction and anchorage of window.

# SERIES 1450 3-1/4" FIXED WINDOW (CW80)

Typical Configurations (Scale: Half Size)



(A) 1450 PW - 1400 TD

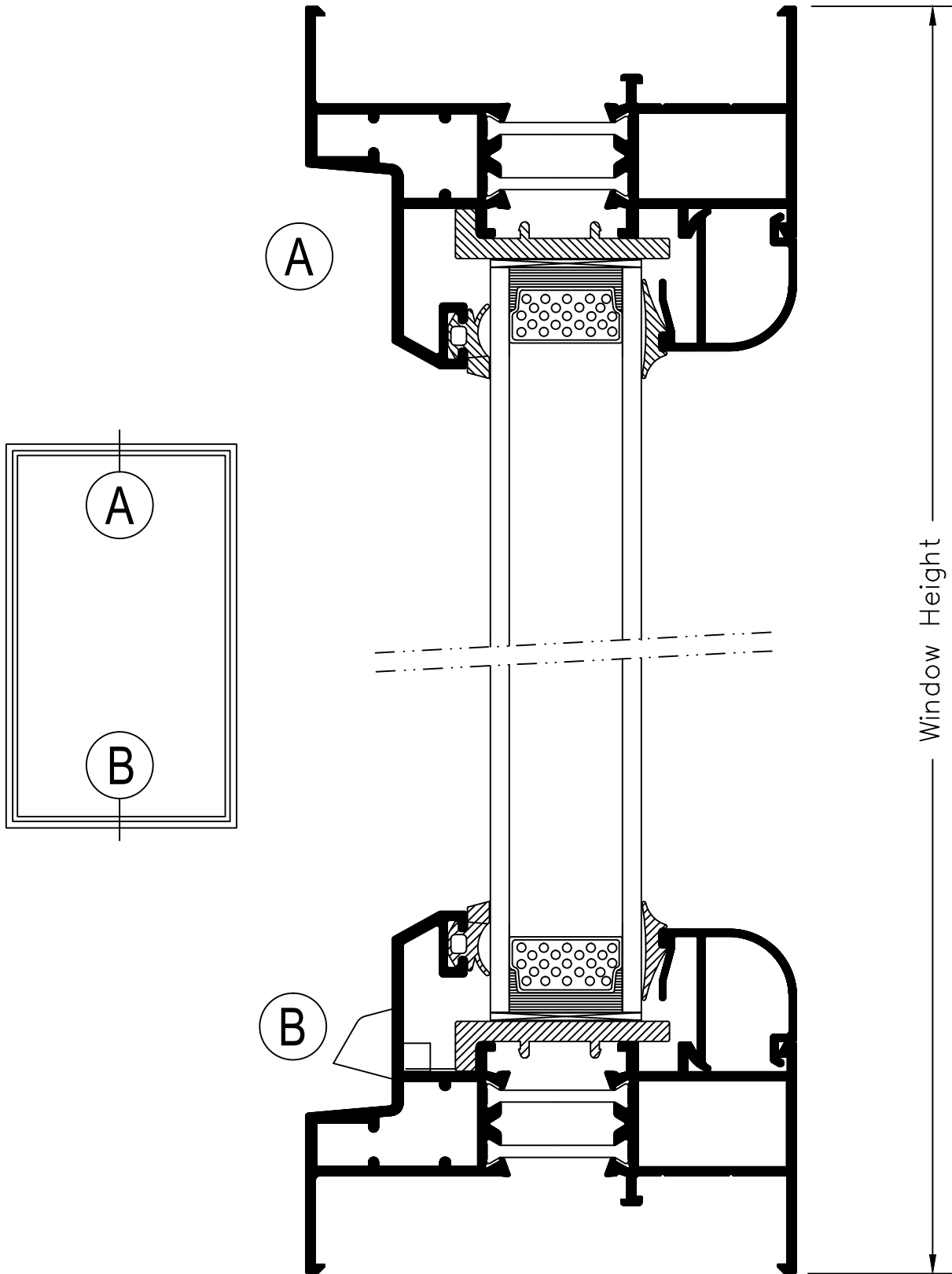


(B) 1400 TD - 1450 PW

See Accessories section for additional options

# SERIES 1450 3-1/4" FIXED WINDOW (CW80)

Product Details (Scale: Full Size)



# SERIES 1450 3-1/4" FIXED WINDOW (CW80)

Product Details (Scale: Full Size)

