

SERIES 4125 4" HORIZONTAL SLIDING WINDOW (AW60)

SPECIFICATIONS

I. GENERAL:

Scope of Work - Furnish all necessary materials, labor and equipment for the complete installation of aluminum windows for this project as shown on the drawings and herein specified. Windows shall be the "Series 4125" as manufactured by Thermal Windows, Inc., Tulsa, Oklahoma. The "Series 4125" is a horizontal double slider with thermally improved frame and sash consisting of two operable, sliding, removable top load sashes. The specifications and materials for the "Series 4125" are as follows:

II. PRODUCTS:

Materials - Aluminum shall be of proper alloy for commercial window construction. All extruded sections shall be of 6063-T5 aluminum alloy.

Frame - Main frame and sash members shall be a nominal thickness as required by ANSI/AAMA 101. Main frame shall be 4.000" in depth. Vertical sash members shall be hollow extrusions. Main frames and sash members are to be extruded aluminum with a structural thermal barrier of high density low thermal conductivity polyurethane, poured and debridged.

Locks - Shall consist of a white bronze cam latch at the interlocking meeting rail along with an independent spring loaded latch for each sash.

Weatherstripping - Shall be .250 polypile with mylar fins conforming to AAMA 701.2, Specification for Pile Weatherstrip. Weatherstripping shall be doubled at all points of contact of the sash and main frames and at the interlocking meeting rail.

III. CONSTRUCTION:

Assembly - Main frame shall be a mechanically joined construction. Corner joints should be "seam sealed" with a quality grade of sealant meeting the requirements of AAMA 803.3. The sashes shall be assembled with two screws at each corner. All screws at joints of sash and main frame shall be secured into integral screw ports.

Glazing - Glass shall be factory glazed with an interior extruded aluminum glazing bead with a vinyl wedge gasket. The insulated glass units shall be 1.000" overall thickness with two panes of glass, separated by an air space. All insulated glass units shall meet the requirements of the ASTM E 2190 specification, Class "A".

Screens - Screen frame shall be of hollow extruded aluminum. Finish shall match the main frames and sash. Insect screening shall be fiberglass or aluminum wire secured with a vinyl spline. Screens shall be full width.

Finish - Shall be a factory applied baked polyurethane powder coat finish meeting the requirements of AAMA 2604 for Pigmented Organic Coating on Extruded Aluminum. Refer to "Colors and Finishes" chart for examples. Bronze anodizing, clear anodizing and high performance AAMA 2605 finishes are optional.

Operation - Each sash is operable on the "Series 4125" Horizontal SLIDING window and will slide open for ventilation. The dual sashes roll on lubricated zinc ball bearing rollers. Each sash is removable from the interior for ease of maintenance.

IV. PERFORMANCE:

Structural - Shall meet the requirements of AAMA/WDMA/CSA 101/I.S.2/A440-05, HC/AW60 specification.

Thermal - Shall meet the requirements of AAMA 1503.1.

NFRC - Shall meet the requirements of NFRC 100 and 200.

Forced Entry - Shall meet the requirements for ASTM F588 Load Identification Grade 10.

Life Cycle - Product meets the criteria including passing air and water tests at the conclusion of the cycle test requirements of AAMA 101 and AAMA 910.

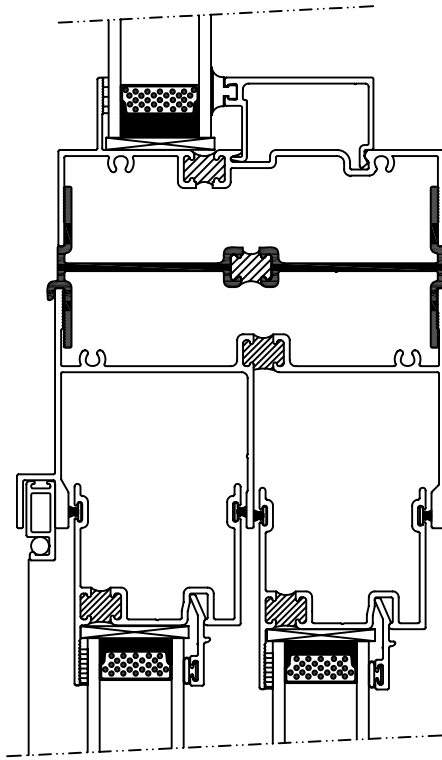
V. INSTALLATION:

Qualifications - Installation shall be performed by skilled, experienced tradesmen. Units shall be installed plumb, level, square and shall be secured in accordance with detailed shop drawings. A non-hardening sealant compatible with aluminum shall be provided by the installer and applied in sufficient quantity to provide a weathertight seal between the window and surrounding construction.

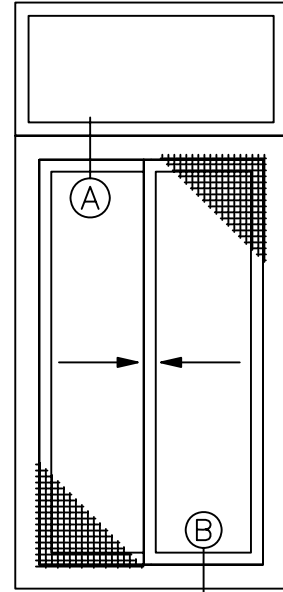
Installation Details - The window manufacturer shall submit complete installation details for the Architects approval. The drawings shall show elevations of windows, full size details of frame and vents, details of construction and anchorage of window.

SERIES 4125 4" HORIZONTAL SLIDING WINDOW (AW60)

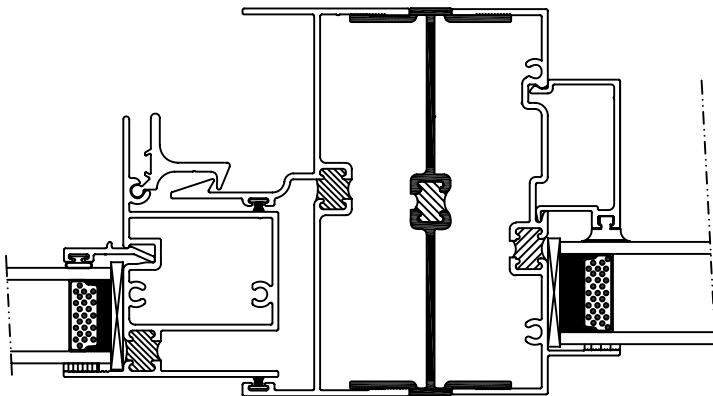
Typical Configurations (Scale: Half Size)



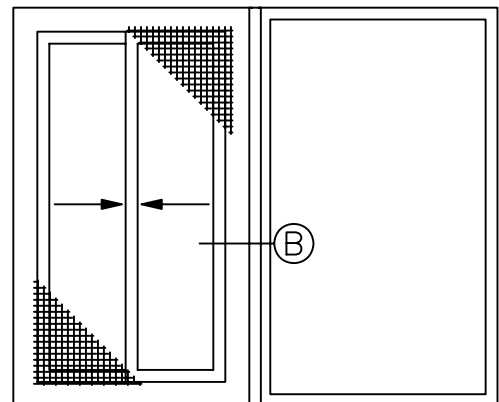
Ⓐ 4125-4150



4125-4150



Ⓑ 4125-4150

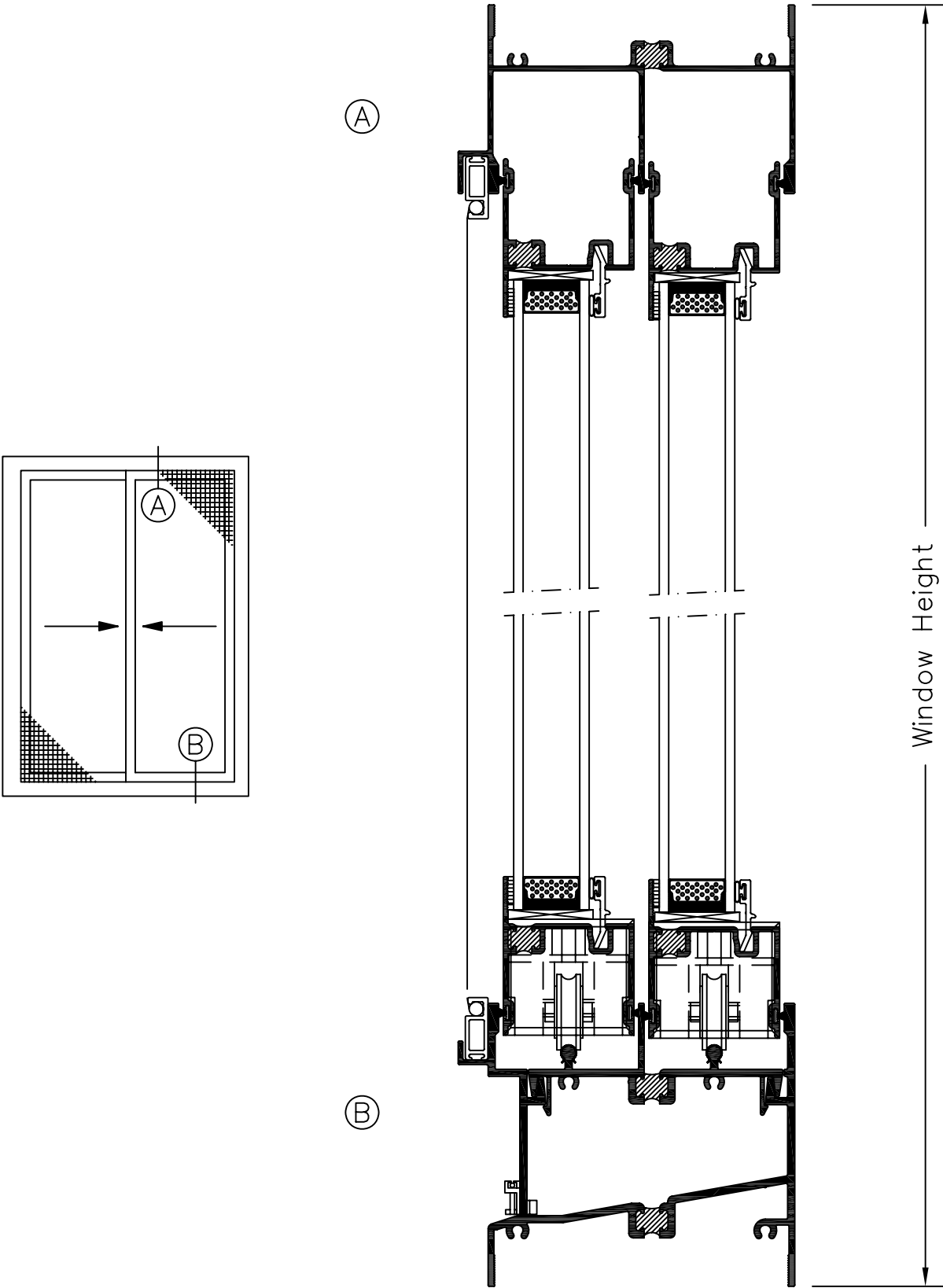


4125-4150

See Accessories section for additional options

SERIES 4125 4" HORIZONTAL SLIDING WINDOW (AW60)

Product Details (Scale: Half Size)



SERIES 4125 4" HORIZONTAL SLIDING WINDOW (AW60)

Product Details (Scale: Half Size)

