

SERIES 4151 4-3/8" TRANSOM for SLIDING GLASS DOORS

SPECIFICATIONS

I. GENERAL:

Scope of Work - Furnish all necessary materials, labor and equipment for the complete installation of aluminum windows for this project as shown on the drawings and herein specified. Windows shall be the "Series 4151" as manufactured by Thermal Windows, Inc., Tulsa, Oklahoma. The "Series 4151" is a fixed window with a thermally improved frame. The specifications and materials for the "Series 4151" are as follows:

II. PRODUCTS:

Materials - Aluminum shall be of proper alloy for commercial window construction. All extruded sections shall be of 6063-T5 aluminum alloy.

Frame - Main frame members shall be a nominal thickness as required by ANSI/AAMA 101. Main frame shall be 4.375" in depth. Main frames members are to be extruded aluminum with a structural thermal barrier of high density low thermal conductivity polyurethane, poured and debridged.

III. CONSTRUCTION:

Assembly - Main frame shall be a mechanically joined construction. Corner joints should be "seam sealed" with a quality grade of sealant meeting the requirements of AAMA 803.3. The sash shall be assembled with two screws at each corner. All screws at joints of sash and main frame shall be secured into integral screw ports.

Glazing - Glass shall be factory glazed with an interior aluminum glazing bead with a wedge gasket. The insulated glass units shall be 1.000" overall thickness with two panes of double strength glass, separated by a .750" air space for optimum insulation. All insulated glass units shall meet the requirements of the ASTM E 2190 specification, Class "A".

Finish - Shall be a factory applied baked polyurethane powder coat finish meeting the requirements of AAMA 2604 for Pigmented Organic Coating on Extruded Aluminum. Refer to "Colors and Finishes" chart for examples. Bronze anodizing, clear anodizing and high performance AAMA 2605 finishes are optional.

IV. PERFORMANCE:

Structural - Shall meet the requirements of AAMA/WDMA/ CSA 101/I.S.2/ A440-08, AW-PG80 specification.

NFRC - Shall meet the requirements of NFRC 100 and 200.

Forced Entry - Shall meet the requirements for ASTM F588 Load Identification Grade 10.

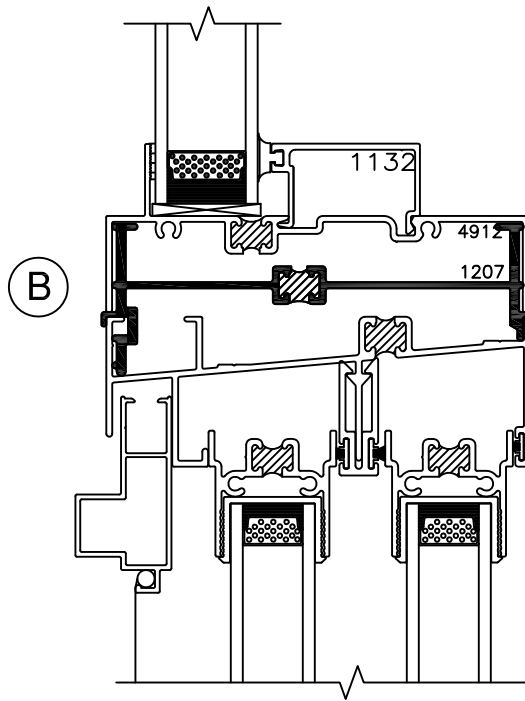
V. INSTALLATION:

Qualifications - Installation shall be performed by skilled, experienced tradesmen. Units shall be installed plumb, level, square and shall be secured in accordance with detailed shop drawings. A non-hardening sealant compatible with aluminum shall be provided by the installer and applied in sufficient quantity to provide a weathertight seal between the window and surrounding construction.

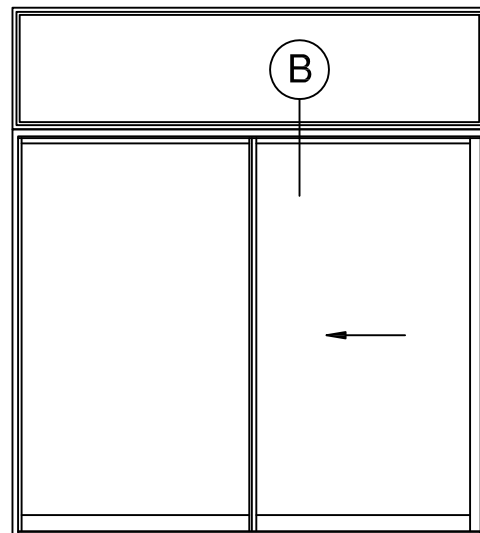
Installation Details - The window manufacturer shall submit complete installation details for the Architects approval. The drawings shall show elevations of windows, full size details of frame and vents, details of construction and anchorage of window.

SERIES 4151 4-3/8" TRANSOM for SLIDING GLASS DOORS

Typical Configurations (Scale: Half Size)



4151 - 9900

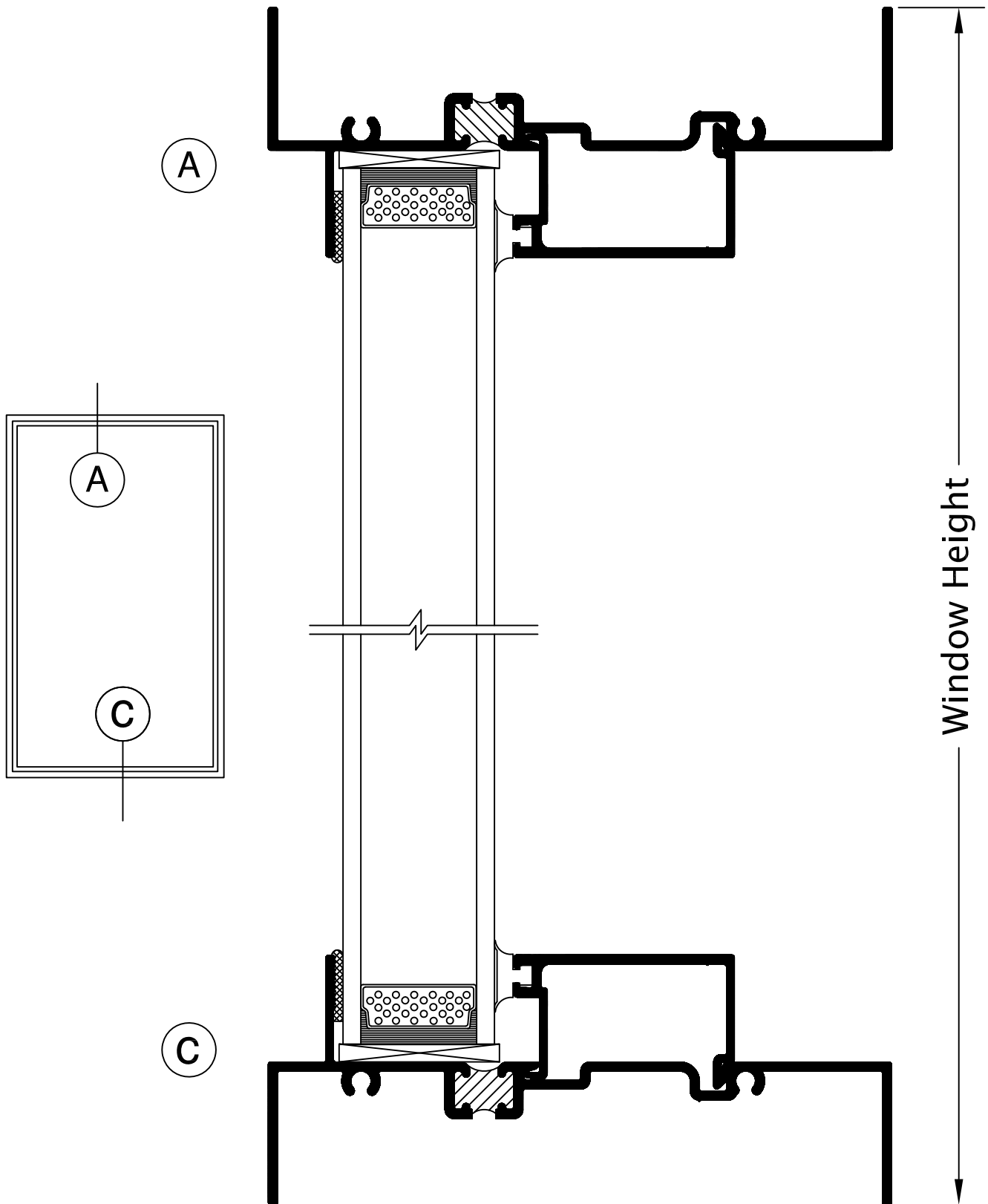


4151 - 9900

See Accessories section for additional options

SERIES 4151 4-3/8" TRANSOM for SLIDING GLASS DOORS

Product Details (Scale: Full Size)



SERIES 4151 4-3/8" TRANSOM for SLIDING GLASS DOORS

Product Details (Scale: Full Size)

