

SERIES 800U 2-5/8" SINGLE OUTSWING CASEMENT (AW70)

SPECIFICATIONS

I. GENERAL:

Scope of Work - Furnish all necessary materials, labor, and equipment for the complete installation of aluminum windows for this project as shown on the drawings and herein specified. Windows shall be the "Series 800U" as manufactured by Thermal Windows, Inc., Tulsa, Oklahoma. The "Series 800U" is an operable, outswing sash with concealed hinges, cam handles with a thermally improved frame and vent. The specifications and materials for the "Series 800U" are as follows:

II. PRODUCTS:

Materials - Aluminum shall be of proper alloy for commercial window construction. All extruded sections shall be of 6063-T5 aluminum alloy.

Frame - Main frame shall be a minimum nominal thickness of .094" and vent members shall be a minimum nominal thickness of .062". Main frame shall be 2.625" in depth. Main frames and vent members are to be extruded aluminum with a structural thermal barrier of glass-reinforced 28mm twin polyamide strips.

Hardware - Lock shall consist of two face-mounted cam locking assemblies. Window operator mechanism shall be the single arm Roto operator by Truth. Operator shall be of drag arm / link design and constructed of Corrosion Guard® components, hardened steel worm and gearing and high pressure zinc alloy die cast housing. Each vent shall have cam handle locks in a painted finish.

Hinges - Shall consist of a two stainless steel, four bar, adjustable friction concealed hinges meeting AAMA 904.1. Hinges shall be constructed of high quality stamped and roll formed materials.

Weatherstripping - Shall have two rows of foam filled soft vinyl bulb weatherstrip at full perimeter of vents.

III. CONSTRUCTION:

Assembly - Main frame shall be coped, butt joined and mechanically fastened with two screws. Corner joints should be "seam sealed" with a quality grade of sealant meeting the requirements of AAMA 803.3. The sash shall be mitered, sealed and crimped into corner inserts. All screws at joints shall be secured into integral screw ports.

Glazing - Glass in the vent shall be factory glazed using butyl glazing tape with extruded aluminum glazing bead and vinyl wedge at interior of glass. The insulated glass units shall be 1" overall thickness with the interior lite of double strength glass, separated by a .750" air space

for optimum insulation. All insulated glass units shall meet the requirements of the ASTM E 2190 specification, Class "A". Optional glazing thickness available for increased thermal performance.

Screens - Screen frame shall be of hollow extruded aluminum frames. Finish shall match the main frames and sash. Insect screening shall be fiberglass or aluminum wire secured with a vinyl spline. Screens shall be full length.

Finish - Shall be a factory applied baked polyurethane powder coat finish meeting the requirements of AAMA 2604 for Pigmented Organic Coating on Extruded Aluminum. Refer to "Colors and Finishes" chart for examples. Bronze anodizing, clear anodizing and high performance AAMA 2605 finishes are optional.

Operation - The ventilator projects out to a 90 degree position for the widest possible egress opening. Hinges shall be non-handed and project the vent while opening to avoid interference between main frame and sash.

IV. PERFORMANCE:

Structural - Shall meet the requirements of AAMA/WDMA/CSA 101/I.S.2/A440-08, AW-PG70 specification.

NFRC - Shall meet the requirements of NFRC 100 and 200.

Forced Entry - Shall meet the requirements for ASTM F588 Load Identification Grade 10.

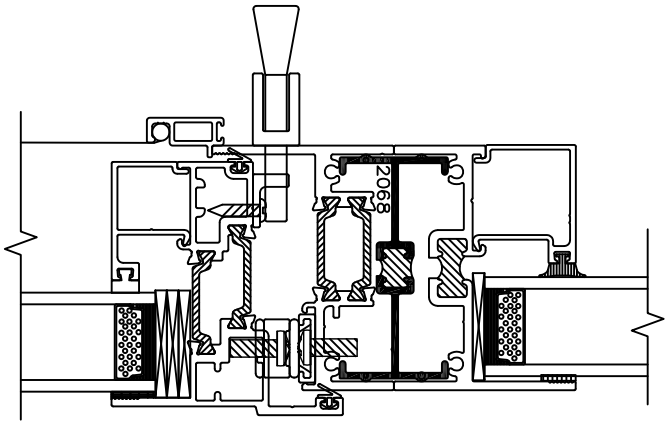
V. INSTALLATION:

Qualifications - Installation shall be performed by skilled, experienced tradesmen. Units shall be installed plumb, level, square and shall be secured in accordance with detailed shop drawings. A non-hardening sealant compatible with aluminum shall be provided by the installer and applied in sufficient quantity to provide a weathertight seal between the window and surrounding construction.

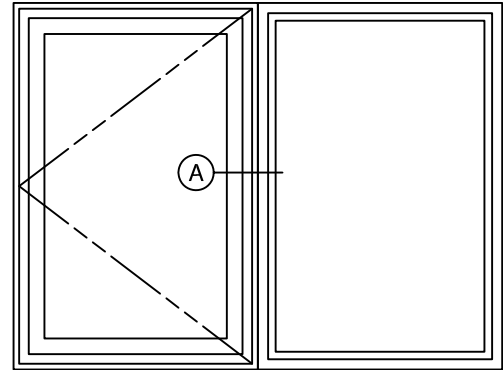
Installation Details - The window manufacturer shall submit complete installation details for the Architects approval. The drawings shall show elevations of windows, full size details of frame and vents, details of construction and anchorage of window.

SERIES 800U 2-5/8" SINGLE OUTSWING CASEMENT (AW70)

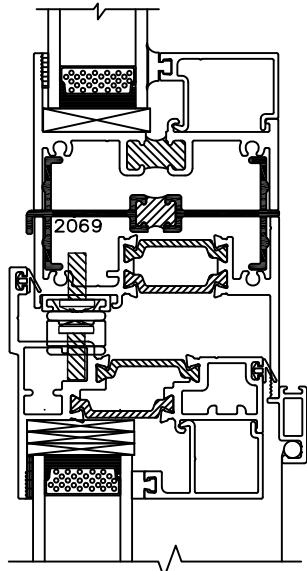
Typical Configurations (Scale: Half Size)



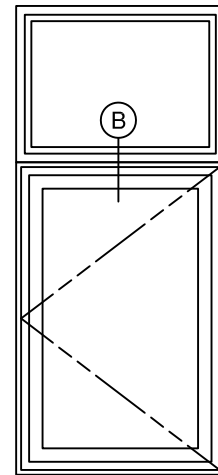
(A) 800U CASEMENT - 850 PW



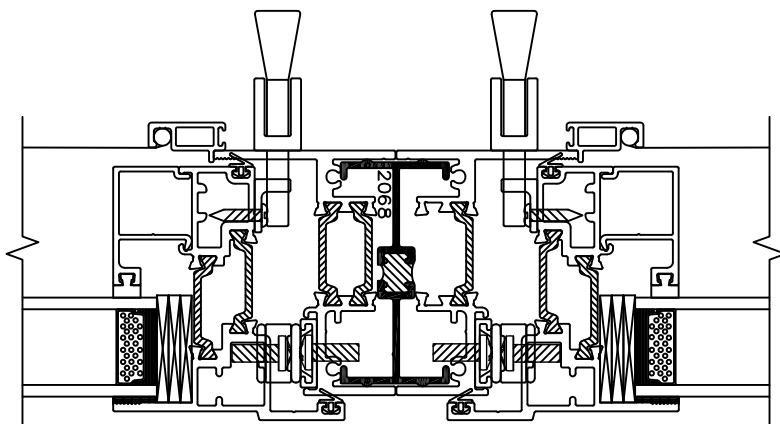
800U CASEMENT - 850 PW



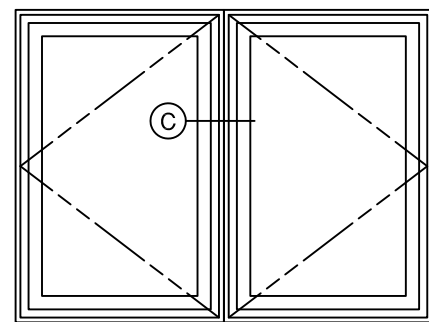
(B) 850 PW - 800U CASEMENT



850 PW - 800U CASEMENT



(C) 800U CASEMENT - 800U CASEMENT

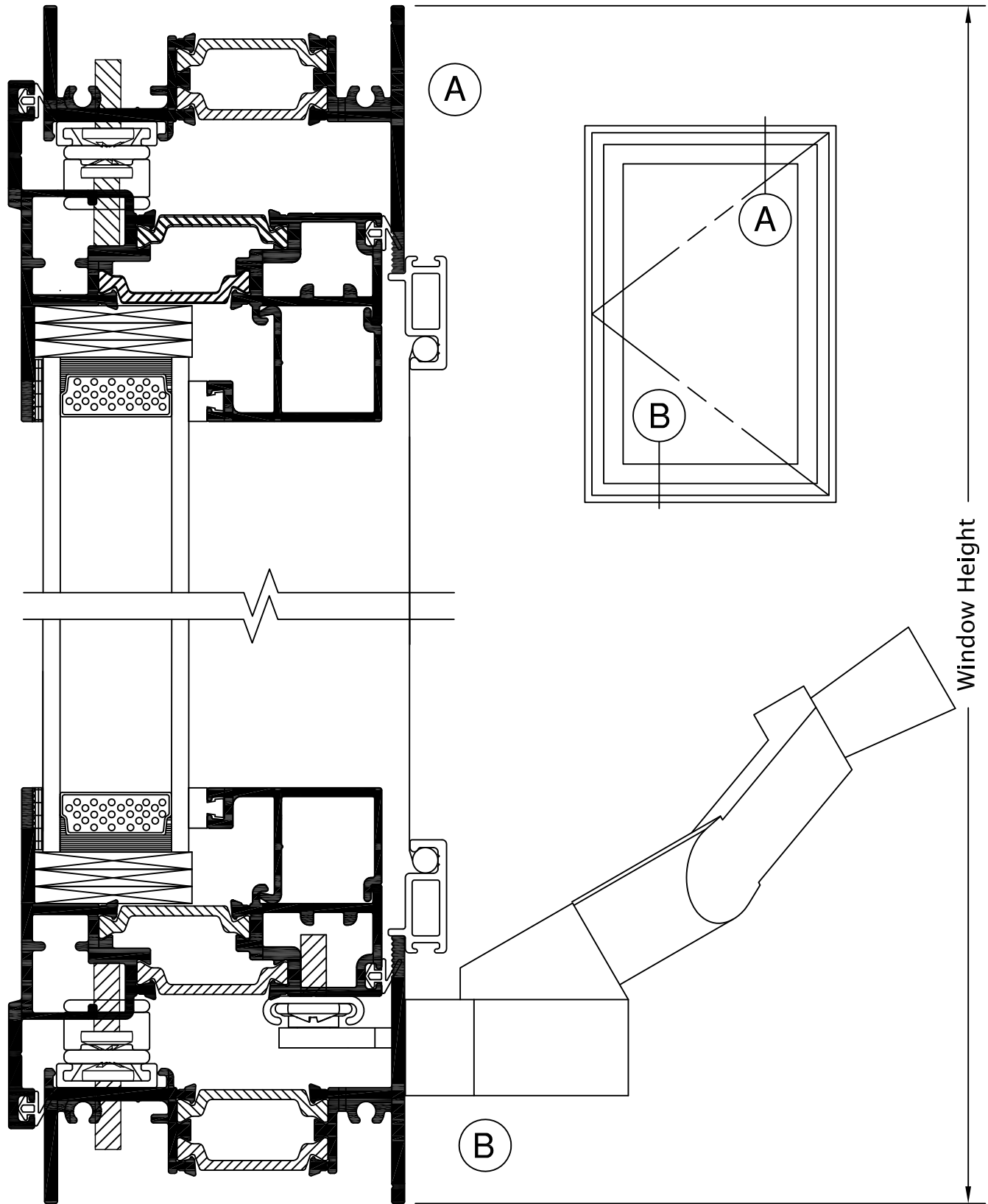


800U CASEMENT - 800U CASEMENT

See Accessories section for additional options

SERIES 800U 2-5/8" SINGLE OUTSWING CASEMENT (AW70)

Product Details (Scale: Full Size)



SERIES 800U 2-5/8" SINGLE OUTSWING CASEMENT (AW70)

Product Details (Scale: Full Size)

