

SERIES 835 2-5/8" PROJECT-IN HOPPER WINDOW (AW80)

SPECIFICATIONS

I. GENERAL:

Scope of Work - Furnish all necessary materials, labor, and equipment for the complete installation of aluminum windows for this project as shown on the drawings and herein specified. Windows shall be the "Series 835" as manufactured by Thermal Windows, Inc., Tulsa, Oklahoma. The "Series 835" is a single vent project in hopper with thermally improved main frame and vent consisting of a cam handle with concealed pawl and side hinges. The specifications and materials for the "Series 835" are as follows:

II. PRODUCTS:

Materials - Aluminum shall be of proper alloy for commercial window construction. All extruded sections shall be of 6063-T5 aluminum alloy.

Frame - Main frame shall be a minimum nominal thickness of .094" and vent members shall be a .094" nominal thickness. Main frame shall be 2.625" in depth. Horizontal and vertical vent members shall be hollow extrusions. Main frames and vent members are to be extruded aluminum with a structural thermal barrier of high density low thermal conductivity polyurethane, poured and debridged.

Hardware - Window locks shall be of concealed pawl design and utilize a cast bronze keeper. The lock handle shall consist of a high quality white bronze cam manufactured by Bronze Craft. Handle assemblies shall be finished to US-25-D.

Hinges - Shall consist of two stainless steel, four bar type design, utilizing a screw adjusted slide shoe. Hinges shall be constructed of high quality stamped and roll formed materials. Hinges used must be certified to AAMA 904.1 specifications.

Weatherstripping - Shall have two rows of foam filled soft vinyl bulb weatherstrip at full perimeter of vents.

III. CONSTRUCTION:

Assembly - Main frame shall be a mechanically joined construction. Corner joints should be "seam sealed" with a quality grade of sealant meeting the requirements of AAMA 803.3. The vent shall be assembled with four screws at each corner. All screws at joints of vent and main frame shall be secured into integral screw ports.

Glazing - Glass in the vent shall be factory glazed using butyl glazing tape with extruded aluminum glazing bead and vinyl wedge at interior of glass. The insulated glass

units shall be 1" overall thickness with the interior lite of double strength glass, separated by a .750" air space for optimum insulation. All insulated glass units shall meet the requirements of the ASTM E 2190 specification, Class "A".

Screens - Screen frame shall be of roll formed aluminum frames. Finish shall match the main frames and sash. Insect screening shall be fiberglass or aluminum wire secured with a vinyl spline. Each screen shall be fastened by screen retainer clips.

Finish - Shall be a factory applied baked polyurethane powder coat finish meeting the requirements of AAMA 2604 for Pigmented Organic Coating on Extruded Aluminum. Refer to "Colors and Finishes" chart for examples. Bronze anodizing, clear anodizing and high performance AAMA 2605 finishes are optional.

Operation - The vent is operable on the "Series 835" hopper window and will project in for ventilation.

IV. PERFORMANCE

Structural - Shall meet the requirements of AAMA/WDMA/CSA 101/I.S.2/A440-08, AW-PG80 specification.

NFRC - Shall meet the requirements of NFRC 100 and 200.

Sound Transmission Class - Shall meet the requirements of ASTM E90. Ratings vary depending upon glazing. See Product Selection Guide for summary.

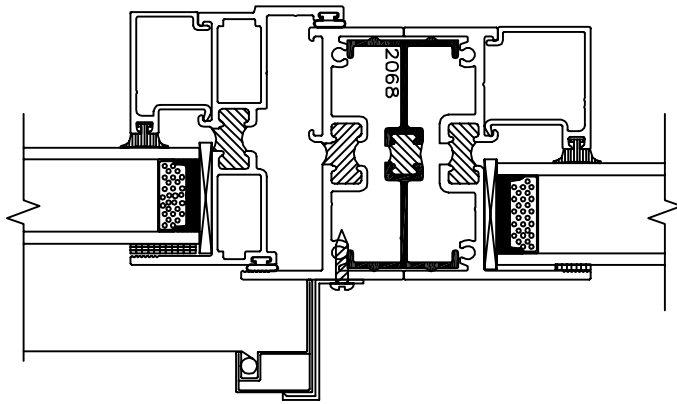
V. INSTALLATION:

Qualifications - Installation shall be performed by skilled, experienced tradesmen. Units shall be installed plumb, level, square and shall be secured in accordance with detailed shop drawings. A non-hardening sealant compatible with aluminum shall be provided by the installer and applied in sufficient quantity to provide a weathertight seal between the window and surrounding construction.

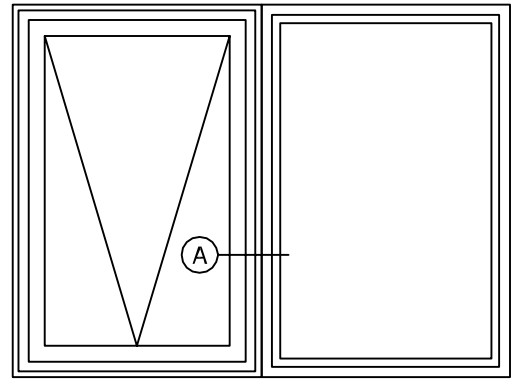
Installation Details - The window manufacturer shall submit complete installation details for the Architects approval. The drawings shall show elevations of windows, full size details of frame and vents, details of construction and anchorage of window.

SERIES 835 2-5/8" PROJECT-IN HOPPER WINDOW (AW80)

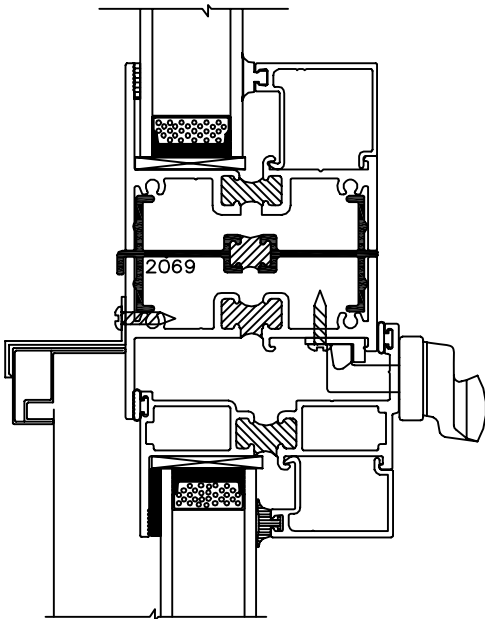
Typical Configurations (Scale: Half Size)



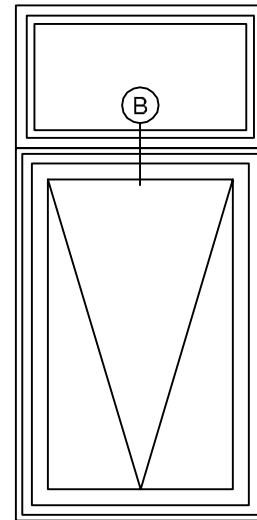
Ⓐ 835 PROJECTED - 850 PW



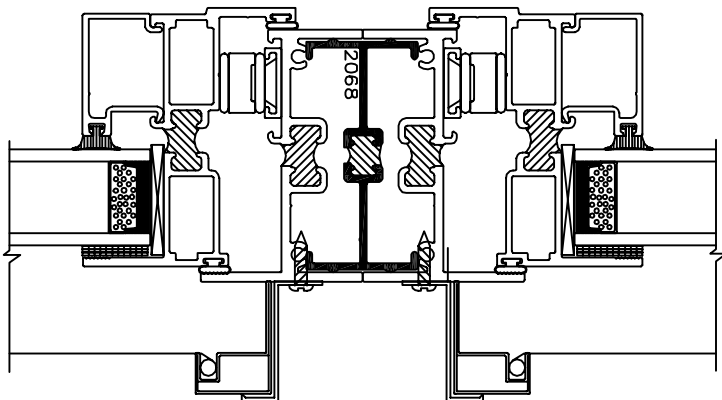
835 PROJECTED - 850 PW



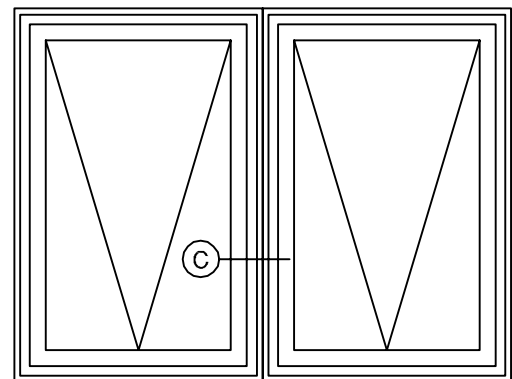
Ⓑ 850 PW - 835 PROJECTED



850 PW - 835 PROJECTED



Ⓒ 835 PROJECTED - 835 PROJECTED

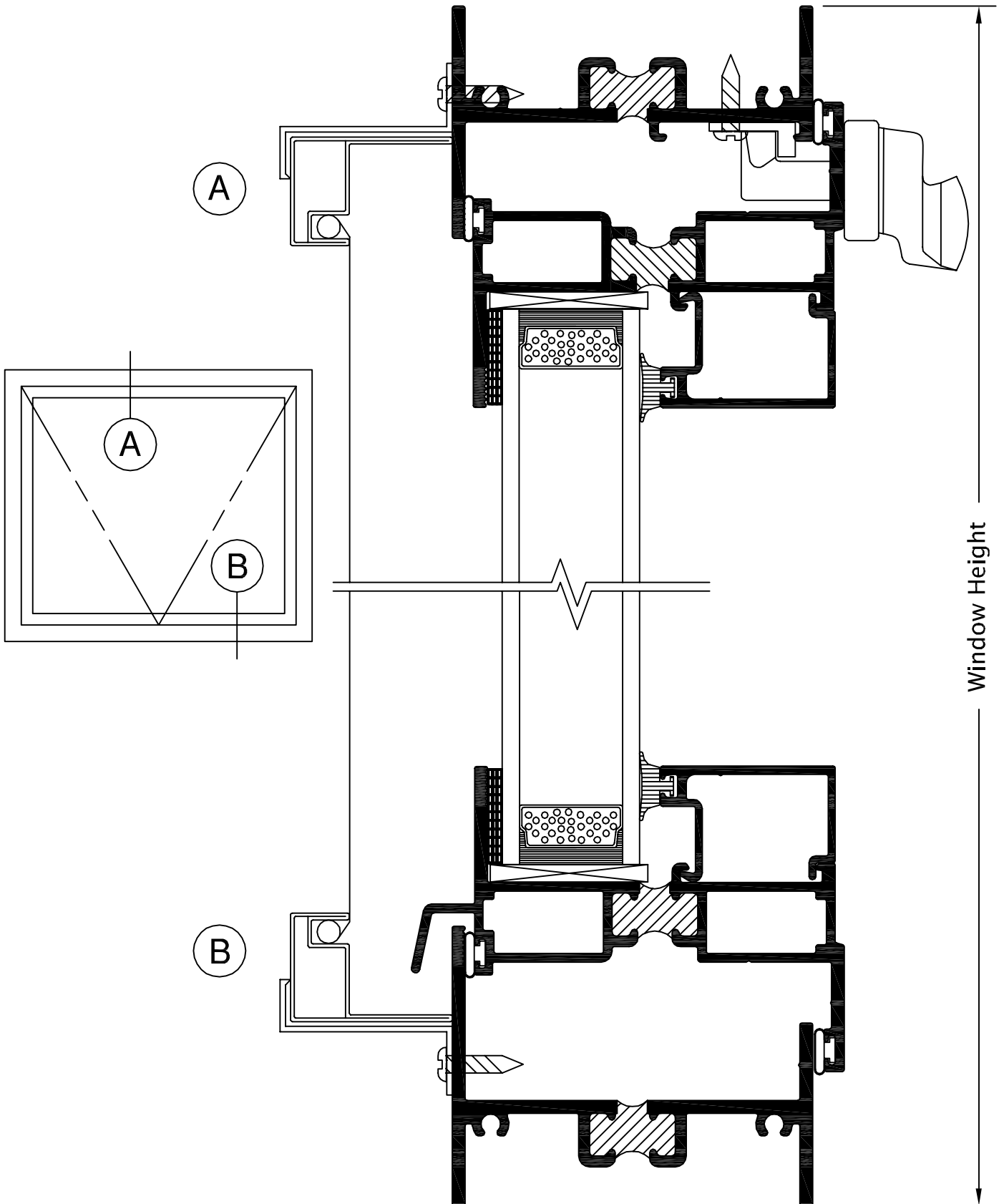


835 PROJECTED - 835 PROJECTED

See Accessories section for additional options

SERIES 835 2-5/8" PROJECT-IN HOPPER WINDOW (AW80)

Product Details (Scale: Full Size)



SERIES 835 2-5/8" PROJECT-IN HOPPER WINDOW (AW80)

Product Details (Scale: Full Size)

