

Series 4150 Fixed Window

CSI Division 08 51 13 - Aluminum Windows

12805 E. 31st St.
Tulsa, OK 74146
Phone: (800) 259-7580
Fax: (918) 665-2197

Style • Quality • Performance

Standard Features

- 1" insulated glass
- Interior Glazed
- Pour and debridge structural thermal break
- 14 standard powder coat colors
- Full range of Anodized and AAMA 2605 finishes available
- 4" frame depth
- Impact Rated
- ATFP / UFC Engineered

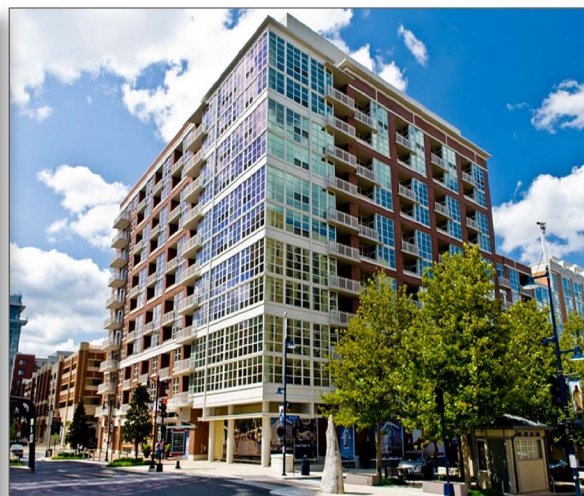
Performance

- AAMA Rating: AW-PG-80 Size: (60"X99")
- Air Infiltration (CFM): 0.01
- Water Resistance (PSF): 12
- Structural (PSF): 120
- STC range: 31-33
- *U-Factor: .42 / .32
- *SHGC: .32 / .30
- *VT: .57 / .52
- CRF: 57 / 52

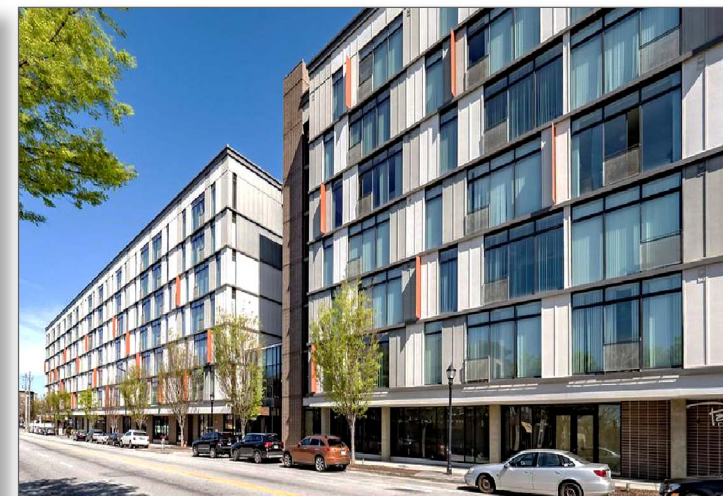
*NFRC simulation results from certified testing labs.
Variety of glazing combinations available.



Potomac Place Condominium
Oxon Hill, MD
Collingwood Custom Powder Coat Finish



Fleet Street - National Harbor
Oxon Hill, MD
Collingwood Custom Powder Coat Finish



Broadstone West
Atlanta, GA
Bronze Powder Coat